

Factors Impacting Maternal Immunisation Coverage.

Professor Paul Van Buynder

Griffith University

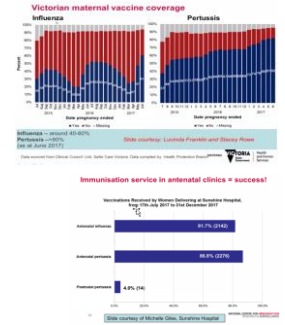
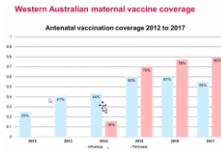
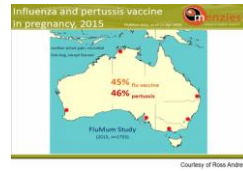
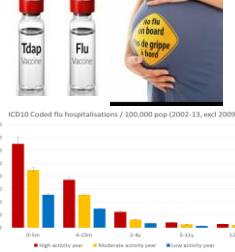


Table 2: Regression analysis of the factors influencing uptake of flu vaccination

	Odds ratio	P
Did you receive a flu vaccine in the year before you were pregnant?		
No	1	
Yes	2.47 (1.67-3.73)	<0.001
Did any doctor recommend you receive flu vaccine in pregnancy?		
No	1	
Yes	13.94 (8.79-22.31)	<0.001
Season		
Jan-Mar	1	
Apr-Jun	1.69 (0.99-2.88)	0.05
Jul-Sep	2.23 (1.13-4.04)	<0.001
Oct-Dec	2.68 (1.89-3.82)	<0.001
Education		
Tertiary	1	
High school	1.12 (0.67-1.92)	0.65
Lower tertiary	3.6 (0.18-6.73)	0.003
Income		
\$0000, or more	1	
20000-40000	1.01 (0.44-2.39)	0.94
40000-80000	0.68 (0.43-1.06)	0.09
Age		
18-24 Years	1	
25-34 Years	0.91 (0.31-2.68)	0.86
35 and more	0.76 (0.23-2.34)	0.53
Constant	0.02	<0.001

Classification in 78.9%_Hosmer and Lemeshow Test is 0.11, _Loglikelihood R Square is 70.7%



The Study

1028 pregnant women in 2017
85% had a pertussis vaccine
35% had an influenza vaccine

3 Major factors

Belief in vaccine (6X)
Physician (14X)
Season (5X)

Dedicated bi level marketing
Extended shelf life

